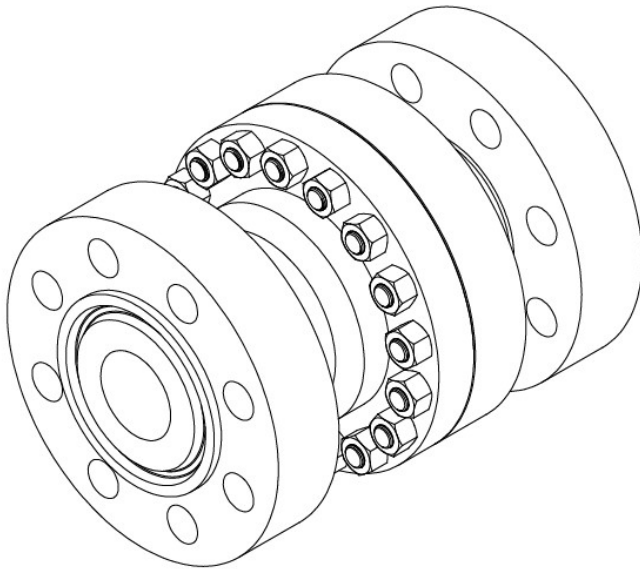




PC SERIES IN-LINE CHECK VALVES



Design

Pressure Rating

- 600# to 2500#

Valve Size

- 2" to 8"

End Connections

- Flanged R.F.
- Flanged RTJ
- Butt Weld
- Socket Weld
- Grayloc Ends

Valve Construction

- 2 Piece Valve Design
- Forged Body
- Split Body For Easy Repair
- Designed to B16.34
- Flanged Ends meet ANSI B16.10 and B16.5
- Complies with API 6D
- NACE MR0175 Available

Seat Designs

- Metal Seat
- TFE Seat

Service Conditions

- Temperatures Up to 1000F
- Pressures as low as Vacuum Service
- Pressures as High as 450 psi
- Abrasive and Viscous Flow Media

Standard Applications:

Process Gas

Steam

Oil and Gas

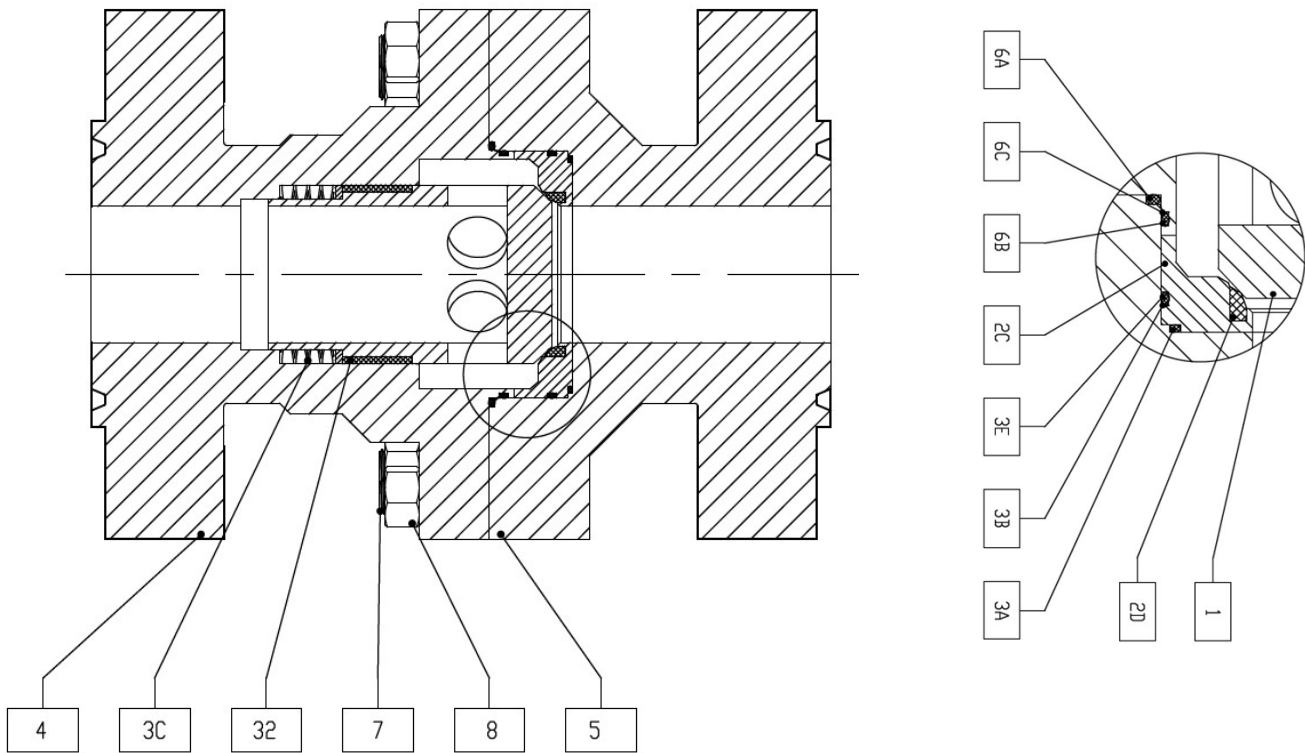
Seat Leakage Class:

API 598

Class V



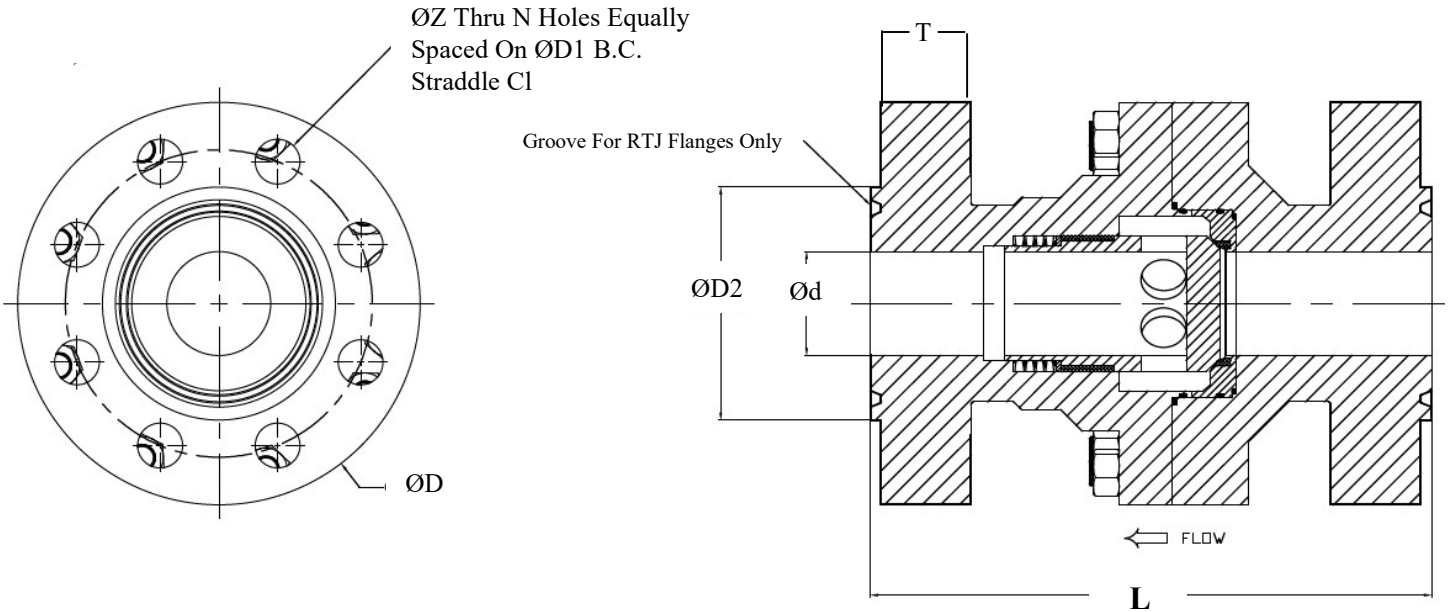
STANDARD BILL OF MATERIAL



ITEM NO.	NAME	CARBON STEEL	STAINLESS STEEL
1	PISTON	316 Stainless Steel / Chrome	316 Stainless Steel / Chrome
2C	SEAT RETAINER	316 Stainless Steel	316 Stainless Steel
2D	SEAT INSERT	PEEK Glass Filled	PEEK Glass Filled
3A	SEAT SEAL	Viton	Viton
3B	OUTER SEAT SEAL	Viton	Viton
3C	SPRING SYSTEM	RTFE	RTFE
3E	BACKUP RING	316sst w/ Graphite Filler*	316sst w/ Graphite Filler*
4A	BODY FEMALE	ASTM A105	ASTM A182/A479 Stainless Steel
4B	BODY MALE	ASTM A105	ASTM A182/A479 Stainless Steel
6A	BODY GASKET	Viton	Viton
6B	BODY GASKET	Viton	Viton
6C	BACKUP RING	TFE	TFE
7	BODY STUD	ASTM A193 Gr. B7	ASTM A193 Gr. B8M
8	BODY NUT	ASTM A194 Gr. 2H	ASTM A194 Gr. 8M
32	DOWEL PIN	416 Stainless Steel	416 Stainless Steel
33	PISTON BUSHING	PEEK	
34	PISTON BUSHING INSERT	316 Stainless Steel	PEEK
35	STUD	ASTM A193 Gr. B7	ASTM A194 Gr. 8M
36	EYE NUT	Galvanized Steel	Galvanized Steel



FLANGE DIMENTIONS



Class 150, Class 300 Full Port

Full Bore Body Design

meet the following standards: DIN, JIS, GB or others

Pressure Class	NPS	DN	d	L			D	D1	D2		f		R	T	N	Z	Weight Lbs RF, RTJ
				RF	RTJ	BW			RF	RTJ	RF	RTJ					
ANSI Class 150	2	50	1.97	7.00	7.50	8.50	6.00	4.75	3.62	4.00	0.06	0.25	R22	0.75	4	0.75	63
	3	80	2.95	8.00	8.50	11.12	7.50	6.00	5.00	5.25	0.06	0.25	R29	0.94	4	0.75	93
	4	100	3.94	9.00	9.50	12.00	9.00	7.50	6.19	6.75	0.06	0.25	R36	0.94	8	0.75	165
	6	150	5.91	15.50	16.00	18.00	11.00	9.50	8.50	8.62	0.06	0.25	R43	1.00	8	0.88	530
	8	200	7.91	18.00	18.50	20.50	13.50	11.75	10.62	10.75	0.06	0.25	R48	1.12	8	0.88	893
ANSI Class 300	2	50	1.97	8.50	9.12	8.50	6.50	5.00	3.62	4.25	0.06	0.312	R23	0.88	8	0.75	74
	3	80	2.95	11.12	11.74	11.12	8.25	6.62	5.00	5.75	0.06	0.312	R31	1.12	8	0.88	126
	4	100	3.94	12.00	12.62	12.00	10.00	7.88	6.19	6.88	0.06	0.312	R37	1.25	8	0.88	198
	6	150	5.91	15.88	16.50	18.00	12.50	10.62	8.50	9.50	0.06	0.312	R45	1.44	12	1.00	596
	8	200	7.91	19.75	20.37	20.50	15.00	13.00	10.62	11.88	0.06	0.312	R49	1.62	12	1.12	975

Note: All weights are estimated.



DIMENSIONS

Full Bore Body Design

Pressure Class	NPS	DN	d	L			D	D1	D2		f		R	T	N	Z	Weight Lbs RF, RTJ
				RF	RTJ	BW			RF	RTJ	RF	RTJ					
ANSI Class 600	2	50	1.97	11.50	11.62	11.50	6.50	5.00	3.62	4.25	0.25	0.312	R23	1.00	8	0.75	126
	3	80	2.95	14.00	14.12	14.00	8.25	6.62	5.00	5.75	0.25	0.312	R31	1.25	8	0.88	215
	4	100	3.94	16.00	17.12	16.00	10.75	8.50	6.19	6.88	0.25	0.312	R37	1.50	8	1.00	390
	6	150	5.91	19.50	22.12	19.50	14.00	11.50	8.50	9.50	0.25	0.312	R45	1.88	12	1.12	827
	8	200	7.91	23.50	26.12	23.50	16.50	13.75	10.62	11.88	0.25	0.312	R49	2.19	12	1.25	1422
ANSI Class 900	2	50	1.97	14.50	14.62	14.50	8.50	6.50	3.62	4.88	0.25	0.312	R24	1.50	8	1.00	198
	3	80	2.95	15.00	15.12	15.00	9.50	7.50	5.00	6.62	0.25	0.312	R31	1.50	8	1.00	288
	4	100	3.94	18.00	18.12	18.00	11.50	9.25	6.19	7.62	0.25	0.312	R37	1.75	8	1.25	638
	6	150	5.91	24.00	24.12	24.00	15.00	12.50	8.50	9.75	0.25	0.312	R45	2.19	12	1.25	1125
	8	200	7.91	29.00	29.12	29.00	18.50	15.50	10.62	12.50	0.25	0.312	R49	2.50	12	1.50	1886

Note: All weights are estimated.

Class 1500 & 2500 Full Port

Full Bore Body Design

Pressure Class	NPS	DN	d	L			D	D1	D2		f		R	T	N	Z	Weight Lbs RF, RTJ
				RF	RTJ	BW			RF	RTJ	RF	RTJ					
ANSI Class 1500	2	50	1.97	14.50	14.62	14.50	8.50	6.50	3.62	4.88	0.25	0.312	R24	1.50	8	1.00	189
	3	80	2.95	18.50	18.62	18.50	10.50	8.00	5.00	6.62	0.25	0.312	R35	1.88	8	1.25	555
	4	100	3.94	21.50	21.62	21.50	12.25	9.50	6.19	7.62	0.25	0.312	R39	2.12	8	1.38	761
	6	150	5.67	27.75	28.00	27.75	15.50	12.50	8.50	9.75	0.25	0.375	R46	3.25	12	1.50	2265
	8	200	7.56	32.75	33.13	32.75	19.00	15.50	10.62	12.50	0.25	0.438	R50	3.62	12	1.75	3284
ANSI Class 2500#	2	50	1.65	17.75	17.87	17.75	9.25	6.75	3.62	5.25	0.25	0.312	R26	2.00	8	1.12	464
	3	80	2.44	22.75	23.00	22.75	12.00	9.00	5.00	6.62	0.25	0.375	R32	2.62	8	1.38	714
	4	100	3.43	26.50	26.88	26.50	14.00	10.75	6.19	8.00	0.25	0.438	R38	3.00	8	1.62	1085
	6	150	5.16	36.00	36.50	36.00	19.00	14.50	8.50	11.00	0.25	0.500	R47	4.25	8	2.12	3407
	8	200	7.05	40.25	40.87	40.25	21.75	17.25	10.62	13.38	0.25	0.562	R51	5.00	12	2.12	5192

ORDERING CODE

Example: 2" PC Series Flanged Check 600# Flanged Carbon Steel Body

2	-	PC	1	T	C	C	B	-	06	B
SIZE	-	SERIES	SEAT SEAL	SEAT	BALL	BALL COATING	BODY	-	CLASS	END CONNECTION
2"		PC	0 No Seal	T RTFE	A 316 Stainless	O No Coating	A 316		01 150#	A Threaded
TO			1 O-Ring	P PEEK	C 410 Stainless	C Hard Chrome	B A105		03 300#	B RF Flanged
8"			2 Graphite		E 304 Stainless	E Electroless Nickle	E 304		06 600#	C RTJ Flanged
					I Monel 400	W Tungsten Carbide			09 900#	D Buttweld
									15 1500#	E Socket Weld
									25 2500#	G Graylok